

Crystal River Restoration Project

Pre-Construction Project Update
River Valley Ranch
May 23, 2023

Crystal River Restoration Project



Project Team



Project Management:
Kevin Schorzman (Public Works)
Eric Brendlinger (Parks & Rec)

Grant Management/Planning Partner:
Heather Lewin (RFC)

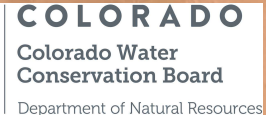
Consultant Team:
Quinn Donnelly (RRO)
Stephen Ellsperman (DHM)



Contractor:
Dave Meyer

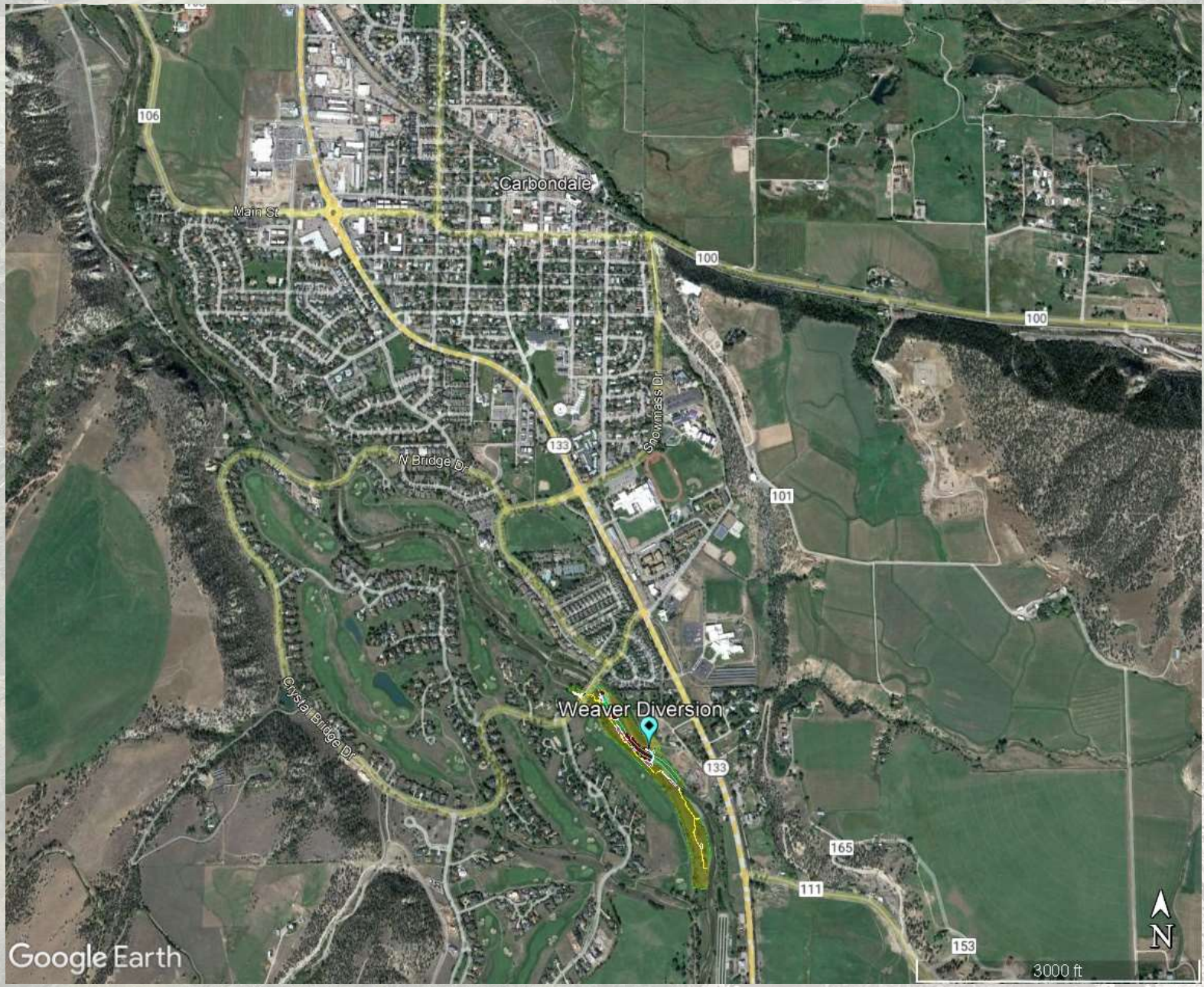


Prime Funding Partners



Crystal River Restoration Project

Site Location



Google Earth

3000 ft

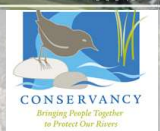


Project Limits



Google Earth

Crystal River Restoration Project



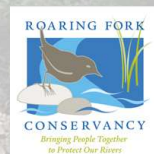
Project Goals

- Restore ecological integrity of riparian zone
- Stabilize river channel and banks
- Improve Weaver Ditch diversion
- Enhance Riverfront Park user experience and accessibility

Keep “wild” feel to site.



Crystal River Restoration Project



Project Development Process

- *Data collection*
- *Site Assessment*
- *Conceptual Design*
- Preliminary Design & Permitting – 2019-2020
- Fundraising – 2021-2023
- Final Design – Spring 2022
- Bid and Award – Spring 2023
- ***Construction – Summer 2023 – Spring 2024***

Crystal River Restoration Project

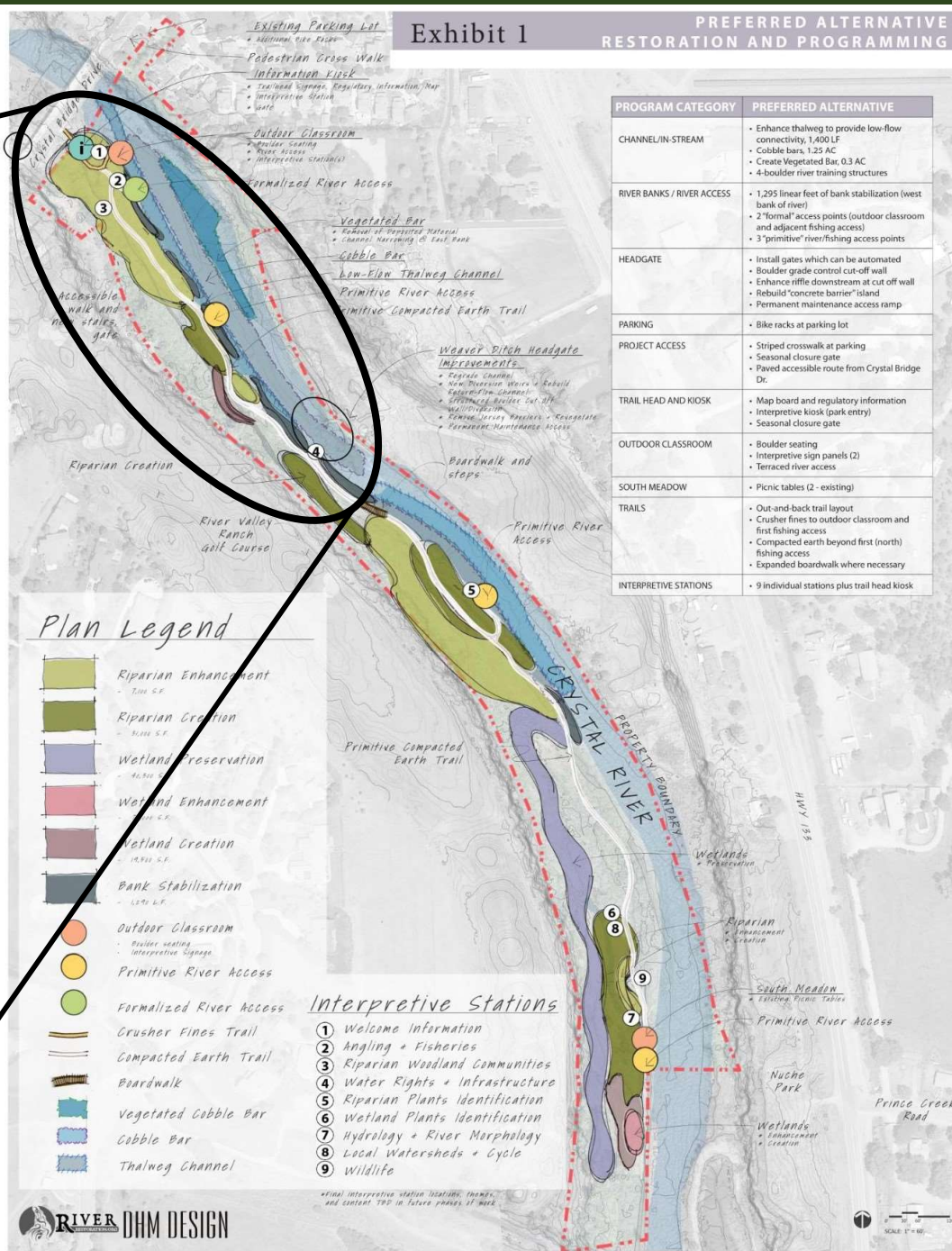
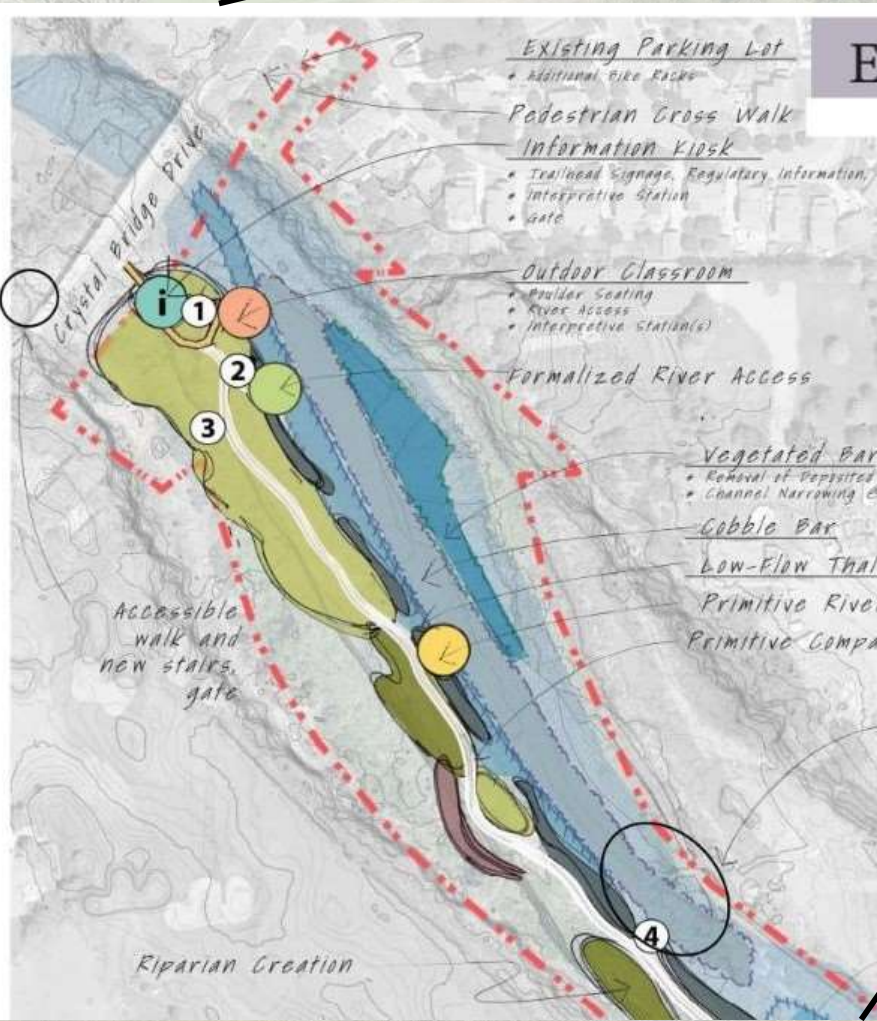


Design Overview

Exhibit 1

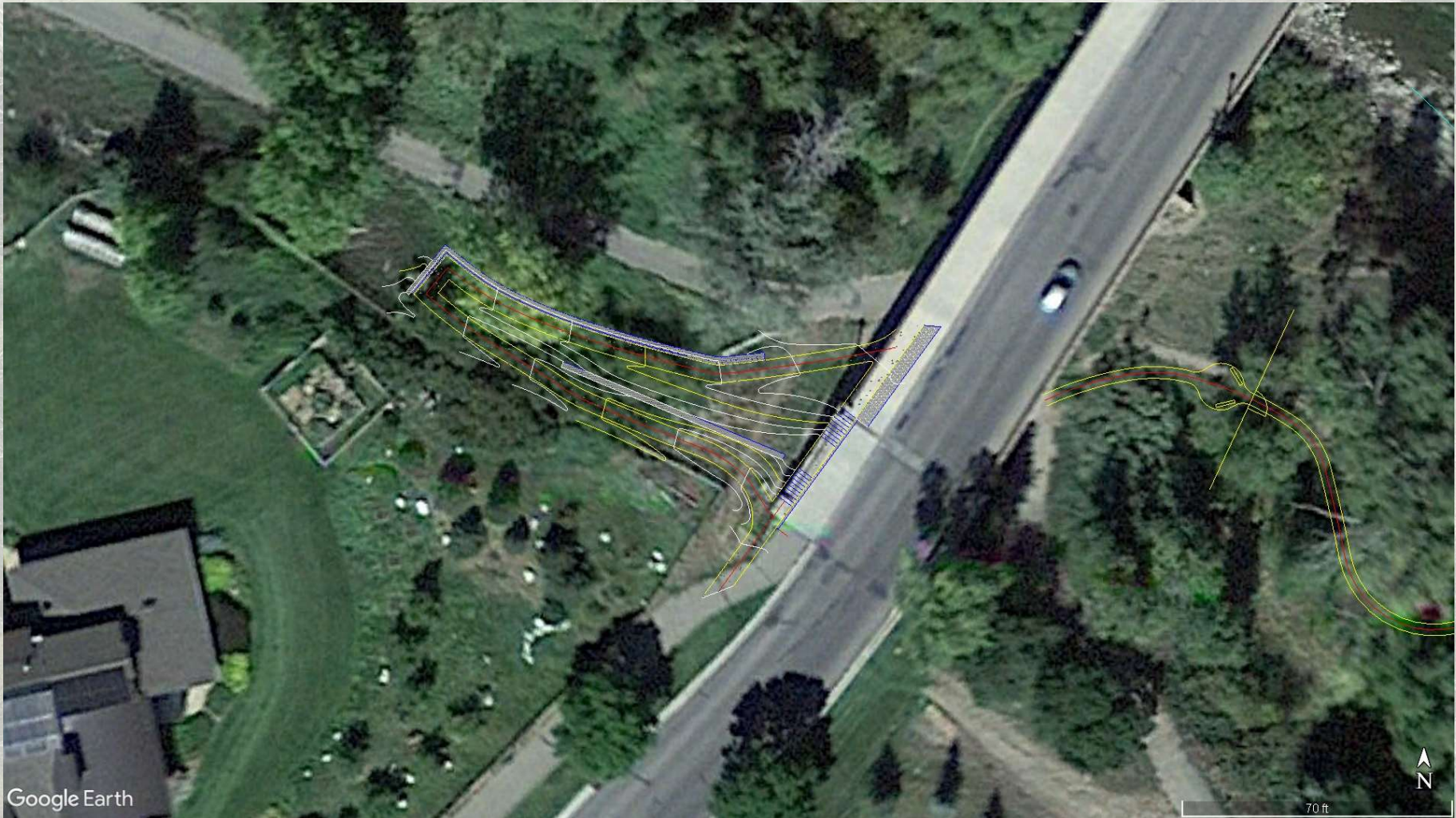
PREFERRED ALTERNATIVE RESTORATION AND PROGRAMMING

PROGRAM CATEGORY	PREFERRED ALTERNATIVE
CHANNEL/IN-STREAM	<ul style="list-style-type: none"> Enhance thalweg to provide low-flow connectivity, 1,400 LF Cobble bars, 1.25 AC Create Vegetated Bar, 0.3 AC 4-boulder river training structures
RIVER BANKS / RIVER ACCESS	<ul style="list-style-type: none"> 1,295 linear feet of bank stabilization (west bank of river) 2 formal access points (outdoor classroom and adjacent fishing access) 3 "primitive" river/fishing access points
HEADGATE	<ul style="list-style-type: none"> Install gates which can be automated Boulder grade control cut-off wall Enhance riffle downstream at cut off wall Rebuild 'concrete barrier' island Permanent maintenance access ramp
PARKING	<ul style="list-style-type: none"> Bike racks at parking lot
PROJECT ACCESS	<ul style="list-style-type: none"> Striped crosswalk at parking Seasonal closure gate Paved accessible route from Crystal Bridge Dr.
TRAIL HEAD AND KIOSK	<ul style="list-style-type: none"> Map board and regulatory information Interpretive kiosk (park entry) Seasonal closure gate
OUTDOOR CLASSROOM	<ul style="list-style-type: none"> Boulder seating Interpretive sign panels (2) Terraced river access
SOUTH MEADOW	<ul style="list-style-type: none"> Picnic tables (2 - existing)
TRAILS	<ul style="list-style-type: none"> Out-and-back trail layout Crusher fines to outdoor classroom and first fishing access Compacted earth beyond first (north) fishing access Expanded boardwalk where necessary
INTERPRETIVE STATIONS	<ul style="list-style-type: none"> 9 individual stations plus trail head kiosk

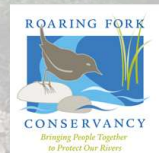


Crystal River Restoration Project

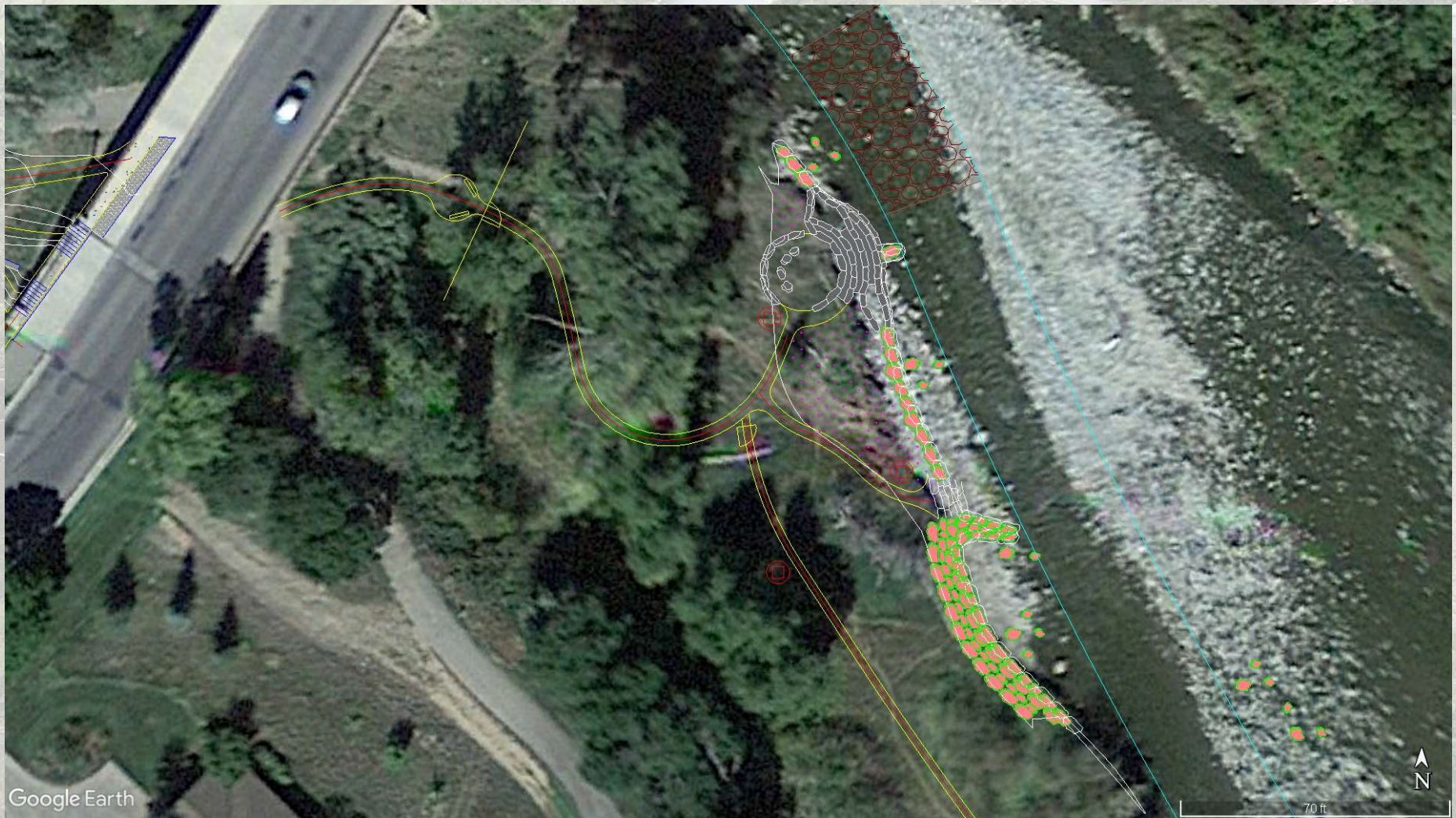
Accessible Ramp



Crystal River Restoration Project



Outdoor Classroom



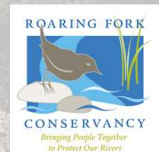
Crystal River Restoration Project



In River and Bank Work



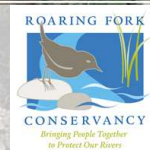
Crystal River Restoration Project



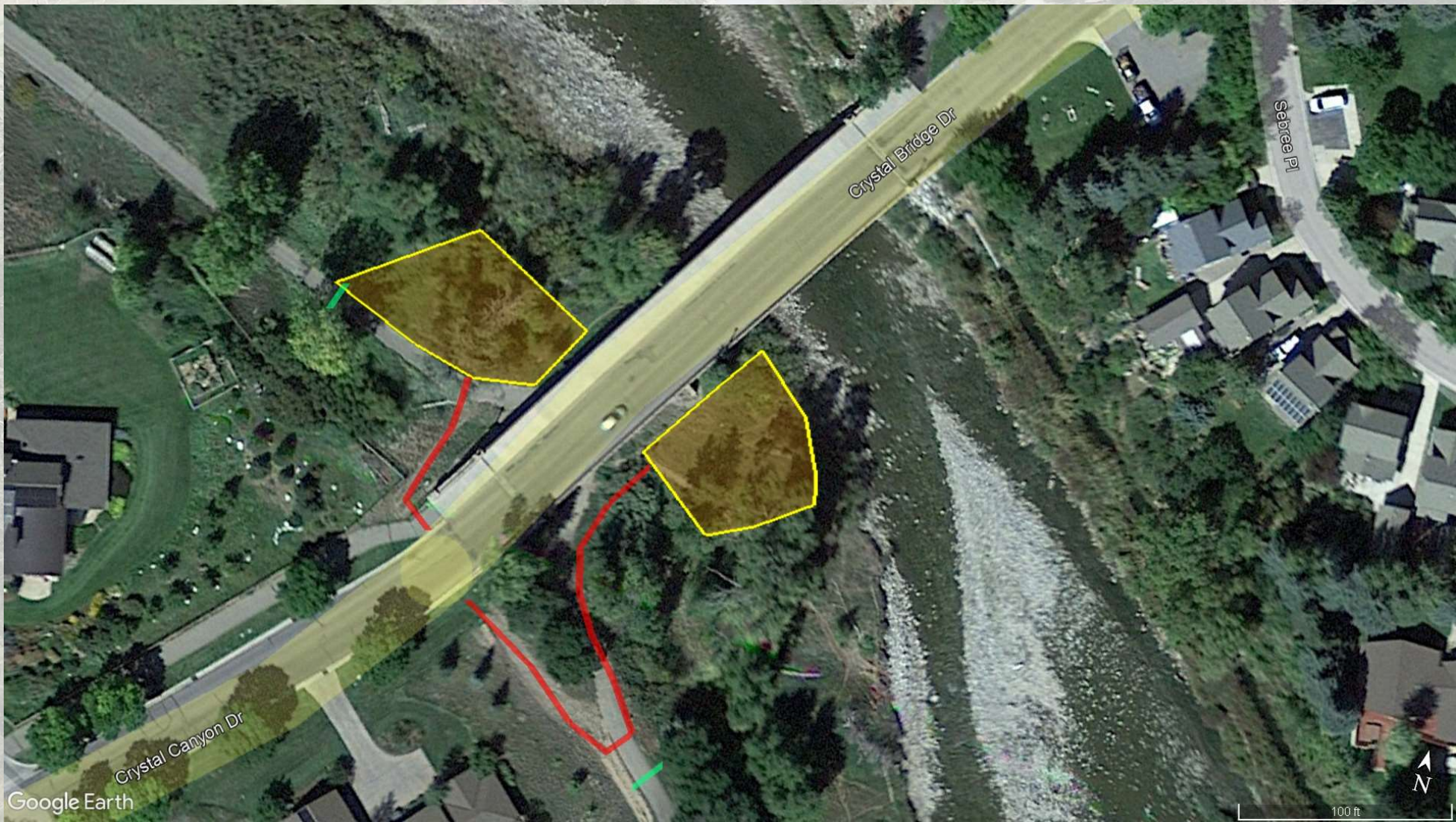
Construction Access and Staging



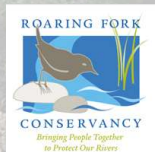
Crystal River Restoration Project



Downstream Construction Access



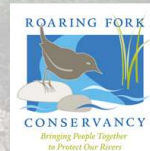
Crystal River Restoration Project



Tentative Construction Schedule

- May 29 – June 9
 - Mobilize Equipment and Set up Staging Areas
- June 12 – June 30
 - Haul Boulders to Site
 - Outdoor Classroom near Crystal Bridge Drive
 - Timber Retaining Wall and Access Trail north of bridge
- July 5 – July 15
 - Outdoor Classroom
 - Trail work in Riverfront Park
- July 15 to September 30
 - In-River Work (Weaver Diversion & River Bed)
 - Bank Stabilization Work
 - Irrigation System
- Spring 2024 – Install Plants

Crystal River Restoration Project



Questions and Comments

Pre-Construction Project Update

River Valley Ranch

May 23, 2023

Crystal River Restoration Project

